

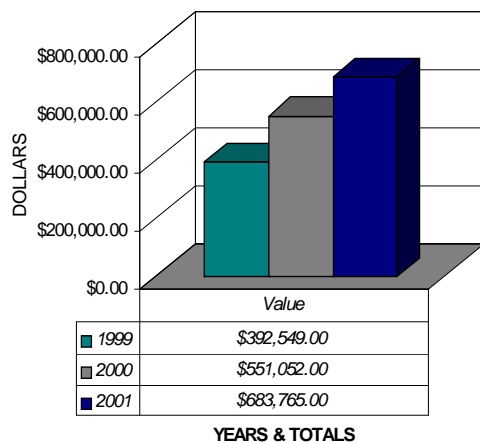
2001 ANNUAL REPORT

SCHOLARSHIPS

A total of 1,373 scholarships worth \$683,765 was awarded in 56 counties during Year 2001. These numbers compare most favorably with last year's totals of 1,121 awarded scholarships worth \$551,052 in 53 counties. The average scholarship amount in Year 2001 was \$498, the same as the average per scholarship in 2000.

Since the founding of the ASPSF in 1990, 8,025 scholarships worth \$3,505,876 have been awarded to deserving single parents in Arkansas. According to follow-up completed on recipients in 2000, 80% either remained in school or earned their degrees while 92% of graduates reported employment at higher than poverty-level salaries. ■

SCHOLARSHIP AWARDS 1999-2001

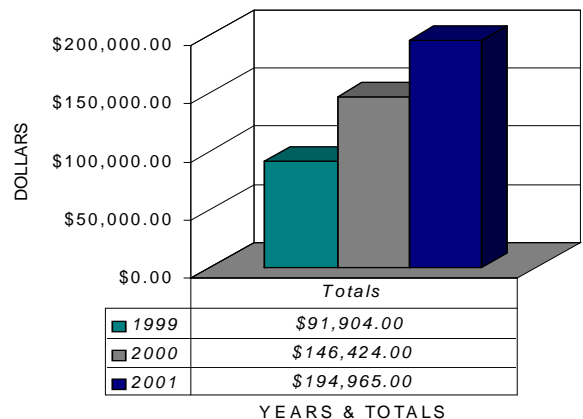


MATCHING GRANTS

Fifty-five county affiliates qualified for \$194,965 in matching grants in year 2001, an increase of \$51,541 over 2000. Affiliates raised \$485,718 in local contributions: for every dollar of matching support, over two dollars were donated locally. Matching grants encourage contributions at the local level and are an extremely significant strategy in helping Single Parent Scholarship Funds to attract support. A total of \$902,015 in matching grants has been distributed since 1990.

An increase in maximum match of up to \$6,000 per county in the twenty-seven counties of the Delta Region was initiated in Year 2001. ■

MATCHING GRANTS 1999-2001



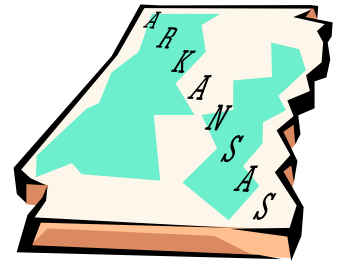
NEW ASPSF AFFILIATES

Nine ASPSF affiliates representing ten counties were developed during the past twelve months. These include:

- ▶ Arkansas County - Industry Partners of Stuttgart has become the administrator of the local fund and has already qualified for \$1,513 in matching funds toward Spring, 2002 scholarships;
- ▶ Columbia County - Under the leadership of the Central Arkansas Development Council, Columbia County has been "re-developed". Yvette Wyrick, CADC's county coordinator, is doing an outstanding job;
- ▶ Cross County - The Wynne Chamber of Commerce is the affiliate administrator in Cross County and has qualified for \$1,125 in matching funds;
- ▶ Fulton and Sharp Counties - A bi-county affiliate has been developed under the auspices of White River Rural Health Center and will offer its first scholarships in early 2002;
- ▶ Lafayette County - The Silas H.

Hunt Community Development Corporation has become the affiliate representative in Lafayette County, led by Precious Williams;

- ▶ Phillips County - Under the leadership of Gail Mundt of Main Street Helena, the Phillips County SPSF has been reorganized and has raised \$638 in a letter writing fundraising campaign. The Phillips County Developmental Center is handling finances for the Scholarship Fund;
- ▶ Pike County - The Central Arkansas Development Council, led by Debbie Whisenhunt, has taken responsibility for Pike County;
- ▶ Prairie County - A new addition to our Delta affiliates is Prairie County, organized by local leaders and administered by White River Rural Health Center;
- ▶ Woodruff County - Also administered by White River Rural Health Center, Woodruff County has gotten off to a great start by awarding \$1,500 in Fall, 2001 scholarships. ■



Sixty-five (of a total 75) counties now have ASPSF affiliates.



The Airport Holiday Inn in Little Rock was the site of our annual ASPSF Leadership Conference, capably planned and administered by the Leadership Development Committee of the ASPSF Board. One hundred five affiliate representatives from thirty counties were in attendance. Nine scheduled workshops, presentations, and discussions were held, focusing on fundraising, board leadership, and scholarship fund operation, as indicated by their titles:

(Continued on page 4)

THE DELTA SCHOLARSHIP PROJECT

An intensive effort to develop new affiliates and strengthen existing ones in the Mississippi Delta region was initiated on February

26th, 2001. Two full-time field representatives, Keshia Valley and Kim Dollins, began their work on that date to provide technical assistance and training to ASPSF affiliates throughout the Delta.

As a result of their efforts, five new or redeveloped affiliates have been formed in Arkansas, Cross, Phillips, Prairie and Sharp Counties. Within the region, 282 scholarships worth \$106,067

(Continued on page 3)

"...on February 26th, 2001. Two full-time field representatives, Keshia Valley and Kim Dollins, began their work..."

MOVING UP AND OUT: POVERTY, EDUCATION, AND THE SINGLE PARENT FAMILY

Dr. Lori Holyfield's book with the above title was written between years 2000-2001 and made available to the public by Temple University Press in early January, 2002. It details Lori's experience as a ninth grade dropout and low income single mom who returned to school after passing her GED and went on to earn a doctorate in

sociology at the University of Georgia. Now a professor at the



Movin' up & out!

University of Arkansas, Lori's book consists of her life story, interviews with Single Parent Scholarship recipients, a

scholarly perspective on the barriers faced by low income single parents, and a description of the Arkansas Single Parent Scholarship Fund. ■

"The full range of changes that education brings about are hard to capture in quantifiable ways, but they are monumental for those of us who have experienced them." Lori Holyfield, *Moving Up and Out*, pg. 73.

(Continued from page 2)
Delta Scholarship Project

were awarded in 2001, representing an increase of 91 scholarships and \$35,065 over last year's totals. \$90,821 was awarded in matching grants in 2001, representing an increase of \$50,867 over the previous year.

A campaign to match a \$75,000

Delta challenge grant was successfully concluded in less than twelve months, adding \$150,000 to the pool of matching grant dollars available to Delta affiliates. Our thanks to the Walton Family Foundation, the Winthrop

Rockefeller Foundation, the Arkansas Office of Community Services, and the Foundation for the Midsouth for their generous support of the Delta Scholarship Project. ■

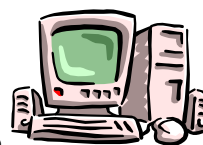
"A campaign to match a \$75,000 Delta challenge grant was successfully concluded in less than twelve months..."

ARKANSAS SCHOLARSHIP INFORMATION SERVICE (ASIS)

During the past year, 167,167 persons visited the ASIS website and made use of the financial aid information provided by the Internet-based project. There are 1,919 units of scholarship, loan, and grant information in the database, along with links to other sites and good advice on using the information to access

money for college.

A grant from the Arkansas Department of Higher Education made possible the services of a part-time marketing specialist who has been increasing the visibility and availability of ASIS to the public.



ASIS Project is poised for full flight in 2002.

Some difficulties with invasive viruses and faulty software have slowed the progress of ASIS this past year, yet more visitors were able to view and use the site than ever before. Staff are working hard to resolve recurring problems and to maintain an operating website. ■

(Continued from page 2)

Leadership Training

- Dr. Linda Beene, Workforce Investment Board, Keynote Speaker
- Fundraising Perspectives From Both Sides of the Table
- Fundraising in Less Populated Areas
- Fundraising in More Populated Areas
- Dinner Presentation by Tipi Word and Industry Partners staff
- Breakfast Topics/Roundtable Discussions
- Effective Operation of SPSF Affiliates
- Promoting Our Story Through the Media
- Scholarships and More: Additional Resources for Students

Evaluations of the conference were excellent, giving it a cumulative 4.84 on a scale of 5.0. Those in attendance enjoyed the opportunity to meet their peers from other areas of the state and participate in in-depth discussions of resource development, leadership strategies, public relations, operating procedures and many other important topics. ■

ARKANSAS SINGLE PARENT SCHOLARSHIP FUND

2001 ANNUAL REPORT

**PREPARED BY:
RALPH H. NESSON
EXECUTIVE
DIRECTOR**

**614 E. EMMA AVE.
SUITE 119
SPRINGDALE, AR 72764
TEL. (479) 927-1402
FAX (479) 751-1110**

ISSUES & CHALLENGES FOR THE COMING YEAR

As the ASPSF expands to cover all 75 Arkansas counties, our obligation and responsibility to provide matching grant support becomes paramount. With this in mind, efforts to maintain and expand a healthy matching grant pool will intensify. We want to be absolutely certain that our grants will remain available to affiliates, even as we reach full capacity as a true statewide network of community scholarship funds.

The needs of single parent students are first and foremost in our thoughts as we plan for the future. The efficient and effective operation of Single Parent Scholarship Funds is our goal, as we strive mightily to offer encouragement and aid to students. ■

Ralph H. Nesson in his office at the Jones Family Resource Building, Springdale.

